



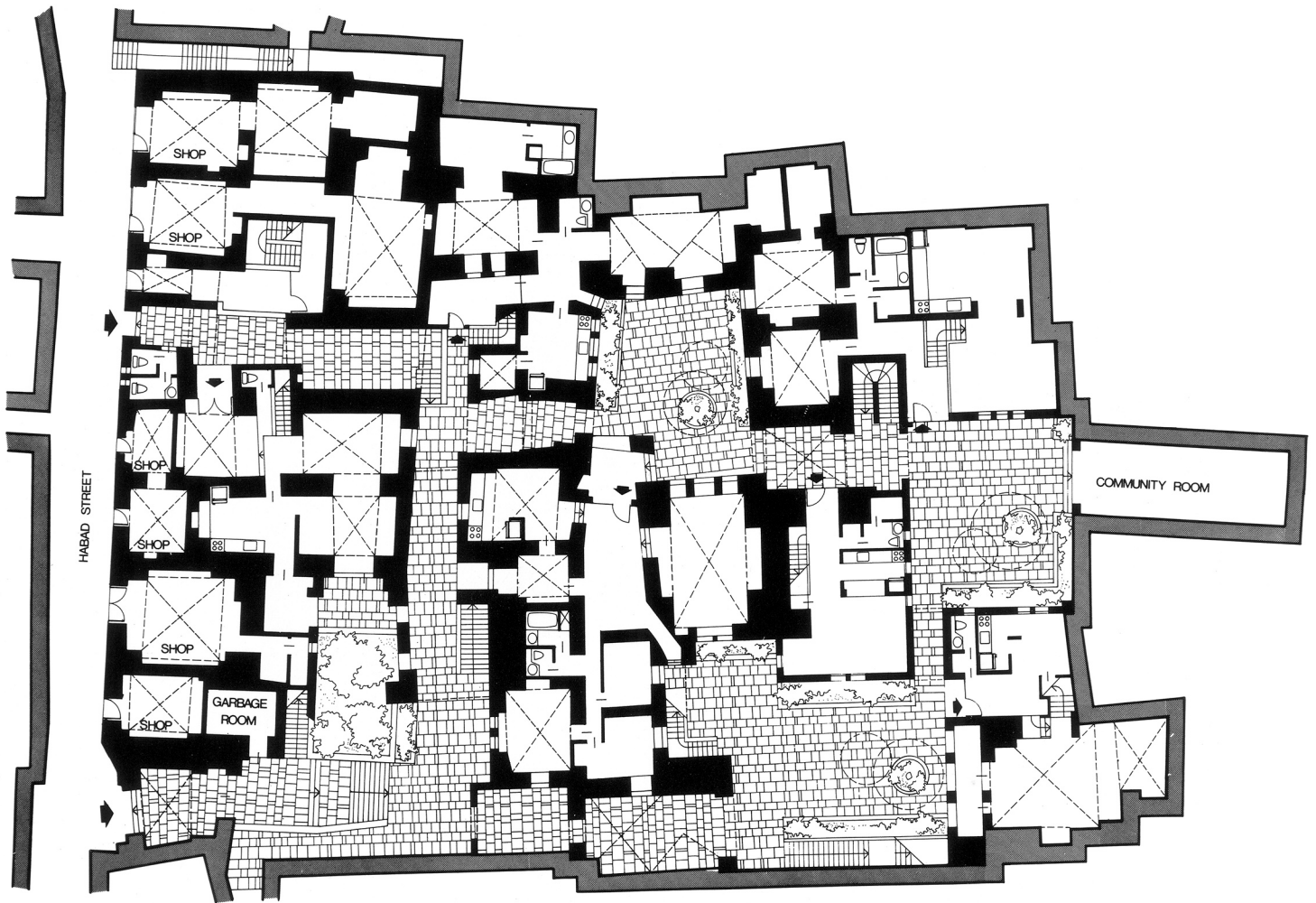
Hosh District 1 Wall detail



Hosh District 2 Ground level view



Hosh District 3 Wall detail



Hosh District 4 Site plan



Hosh District

| | <i>Image caption</i> | <i>Image attribution</i> |
|----|----------------------|--------------------------|
| 1 | Wall detail | Safdie Architects |
| 2 | Ground level view | Ya'Acov Harlap |
| 3 | Wall detail | Michal Ronnen Safdie |
| 4 | Site plan | Safdie Architects |
| 5 | | |
| 6 | | |
| 7 | | |
| 8 | | |
| 9 | | |
| 10 | | |
| 11 | | |
| 12 | | |
| 13 | | |
| 14 | | |
| 15 | | |

Images © Safdie Architects. Explicit permission to use images is required. Contact the Communications Director at Safdie Architects (617.629.2100) for more information.

Published by the Moshe Safdie Archive, Rare Books and Special Collections, McGill University Library, 2015.